

RESOLUTION NO. 22-37

**A RESOLUTION TO ADVERTISE FOR BIDS FOR BAFFLE SYSTEM AT EAST  
SEWAGE PLANT**

WHEREAS, a new Baffle System is needed at the East Sewage Plant;

WHEREAS, the anticipated cost for the purchase and installation of a Baffle System will require bids;

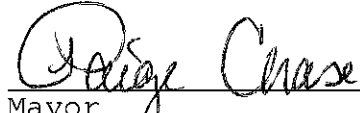
WHEREAS, advertisement for bids for a Baffle System at East Sewage Plant is in the best interest of the City of Monticello.


It is, by the City Council of Monticello, resolved as follows:

1. That the Mayor is authorized for bids for the purchase of a Baffle System in form and substance consistent with Exhibit "1"

(END OF RESOLUTION)

ADOPTED on this 24 day of May, 2022.

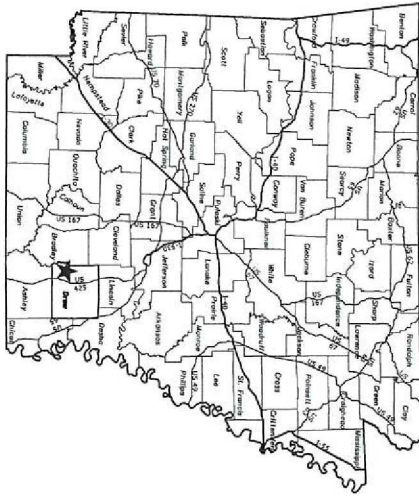
  
\_\_\_\_\_  
Mayor

  
\_\_\_\_\_  
City Clerk

# MONTICELLO EAST WWTP REPLACEMENT OF BAFFLES

## MONTICELLO, ARKANSAS

*Charlie*



LOCATION MAP



VICINITY MAP

- INDEX TO DRAWINGS
- 1 COVER SHEET
  - 2 AERIAL OVERVIEW
  - 3 BAFFLE No.1 PROFILE & ELEVATION
  - 4 BAFFLE No.2 PROFILE & ELEVATION
  - 5 BAFFLE No.3 PROFILE & ELEVATION
  - 6 FLOATING BAFFLE SECTIONS
  - 7 FLOATING BAFFLE DETAILS 1
  - 8 FLOATING BAFFLE DETAILS 2
  - 9 FLOATING BAFFLE CONNECTOR DETAILS

MAY 2022  
MCE PROJECT NUMBER 21-5836

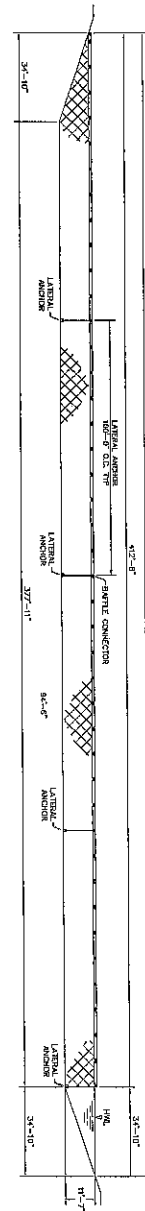
REV	DATE	REVISIONS

**MCE McCLELLAND**  
**CONSULTING ENGINEERS, INC.**  
DESIGNED TO STAY

<http://www.mce.us.com>  
7302 KANIS ROAD  
LITTLE ROCK, ARKANSAS 72204  
(501) 371-0272

LITTLE ROCK, AR • FAYETTEVILLE, AR • FORT SMITH, AR • TULSA, OK

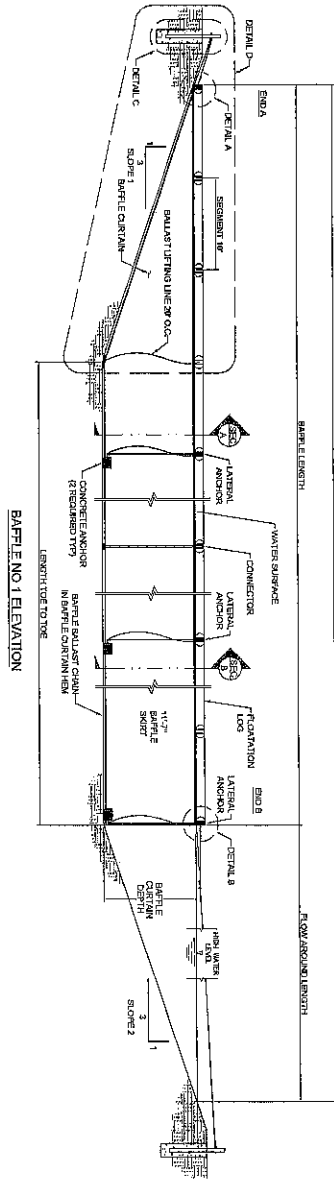




DIRECTOR FLOATING BAFFLE  
CELL NO. 1

BAFFLE NO. 1 PROFILE

FLOATING BAFFLE DIMENSIONS										
BAFFLE NUMBER	1	LAGOON LENGTH FROM HEAD	37'-11"	LAGOON DEPTH AT HEAD	11'-7"	SLOPE 1	1:1	SLOPE 2	1:1	VERIFIED FLOATING BAFFLE DIMENSIONS TO BE PROVIDED BY CONTRACTOR
BAFFLE LENGTH	37'-11"	BAFFLE LENGTH AT HEAD	42'-0"	BAFFLE LENGTH AT TAIL	37'-11"	MAXIMUM BOW/ROUND END RADIUS	54'-0"	FLOW AROUND RATE	1,500 GPM	FLOW AROUND QUANTITY
BAFFLE WIDTH	54'-10"	CONCRETE ANCHOR	4	CONCRETE ANCHOR QUANTITY	1	CONCRETE ANCHOR DIMENSIONS	1'-0" x 1'-0" x 1'-0"	CONCRETE ANCHOR WEIGHT	1,500 LBS	CONCRETE ANCHOR WEIGHT



BAFFLE NO. 1 ELEVATION

1. ALL CONCRETE AND COATING SHALL BE CHECKED AND VERIFIED BY THE CONTRACTOR PRIOR TO INSTALLATION.
2. SHALL BE INSTALLED FROM THE DOWN-TO-UP END OF THE LAGOON AND SHALL BE INSTALLED TO THE DOWN-TO-UP END OF THE LAGOON.
3. ALL REINFORCING SHALL BE PROVIDED BY THE CONTRACTOR.
4. ALL REINFORCING SHALL BE PROVIDED BY THE CONTRACTOR.
5. CONCRETE PROTECTIVE PAINT SHALL BE PROVIDED BY THE CONTRACTOR.
6. CONCRETE SHALL BE PROVIDED BY THE CONTRACTOR.
7. REINFORCING SHALL BE PROVIDED BY THE CONTRACTOR.
8. CONCRETE SHALL BE PROVIDED BY THE CONTRACTOR.
9. THE CONTRACTOR SHALL BE RESPONSIBLE FOR THE INSTALLATION AND MAINTENANCE OF THE BAFFLES.

REVISIONS		
REV	DATE	DESCRIPTION

**BAFFLE NO. 1 PROFILE & ELEVATION**  
 DESIGNED BY: [Name]  
 CHECKED BY: [Name]  
 DATE: MAY 2022  
 SCALE: AS SHOWN  
 SHEET NO: 3

MONTICELLO EAST WWTP  
 REPLACEMENT OF BAFFLES  
 MONTICELLO, ARKANSAS

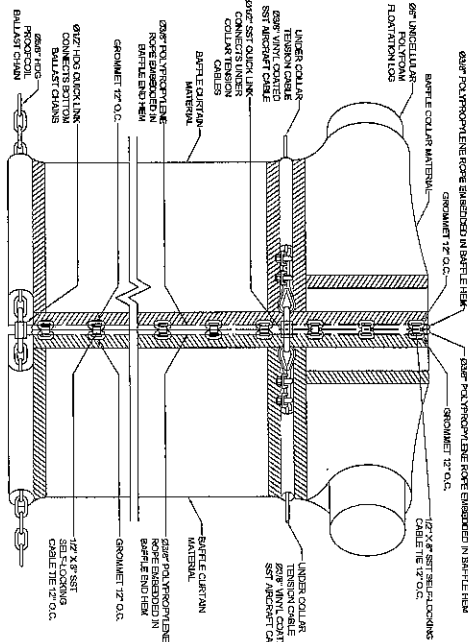
015-02-2022  
 ORIGINAL SUBMITTED ON THE

**MCE** McCLELLAND CONSULTING ENGINEERS, INC.  
 7302 KANIS ROAD  
 LITTLE ROCK, ARKANSAS 72204  
 (501) 371-0272  
 HTTP://WWW.MCE.US.COM

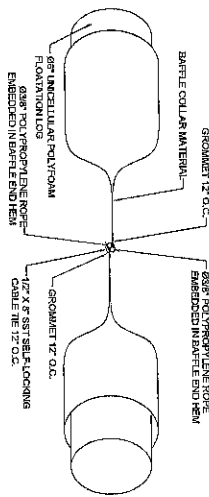




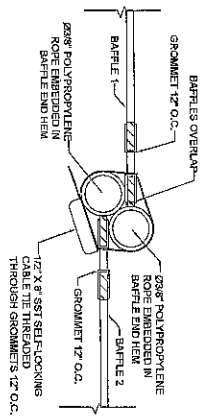
DIRECTOR FLOATING BAFFLE CONNECTOR



CONNECTOR ELEVATION




CONNECTOR PLAN



CONNECTOR PLAN DETAIL

- NOTES:
1. ALL DIMENSIONS AND LOCATIONS SHALL BE CHECKED AND VERIFIED BY THE CONTRACTOR PRIOR TO INSTALLATION.
  2. BAFFLE SHALL BE MANUFACTURED PER 685F-004-1 FOR THE CONTRACTOR SUPPLIER'S OWN SPECIFIC.
  3. ALL MATERIALS SHALL BE BALANCED ON STAINLESS STEEL AS NOTED.
  4. ALL THEORETICAL STAINS SHALL BE INDICATED ON THE DRAWING.
  5. STRAPPING OR OTHER METHODS OF FASTENING SHALL BE USED IN ALL AREAS NOT IDENTIFIED.
  6. BARGE COLLAR SHALL BE USED TO PROTECT FROM IMPACT DAMAGE TO BARGE AND BARGE MOUNTING.
  7. BARGE MOUNTING PARTS AND METHOD AND DETAILS SHALL BE IDENTIFIED BY CONTRACTOR.
  8. CONTRACTOR TO VERIFY THE DIMENSIONS OF THE LAGERS AND DETAILS THEIR BARGE TO BEET CLAMP THE BARGE TIME.
  9. THIS CONTRACTOR'S WORK SHALL BE SUBJECT TO THE CONTRACTOR'S OWNERS.

REV	DATE	DESCRIPTION


**811**  
 Call before you dig  
 1-800-4-A-DIG

MONTICELLO EAST WWTP  
 REPLACEMENT OF BAFFLES  
 MONTICELLO, ARKANSAS

ALL RIGHTS RESERVED  
 LICENSED PROFESSIONAL ENGINEER  
 STATE OF ARKANSAS  
 No. 12345  
 DATE: 12/15/2021  
 DESIGN: SUBMITTED ON THE

**MCE** McCLELLAND CONSULTING ENGINEERS, INC.  
 7302 KANIS ROAD  
 LITTLE ROCK, ARKANSAS 72204  
 (501) 371-0272  
 HTTP://WWW.MCE.US.COM